

SIAM KUBOTA Corporation (Navanakorn)

1. Outline

Address	101/19-24 Moo 20, Khlongnueng, Khlongluang, Pathumthani
Number of employees	1,318 (Dec, 2021)
Site area	80,000 m ²
Establishment day*	Aug/2010
ISO14001 certification date	Feb/2003 (recertificated Feb/2021)
Site overview	Diesel Engine, Power Tiller & PEM Manufacturing and sales of tractors, combines harvesters, horizontal diesel engines and power tillers, and sales of construction machinery

*Date of merger between The Siam Kubota Industry Co., Ltd. and Siam Kubota Tractor Co., Ltd.



2. Products

Main products



Diesel Engine



Power Tiller

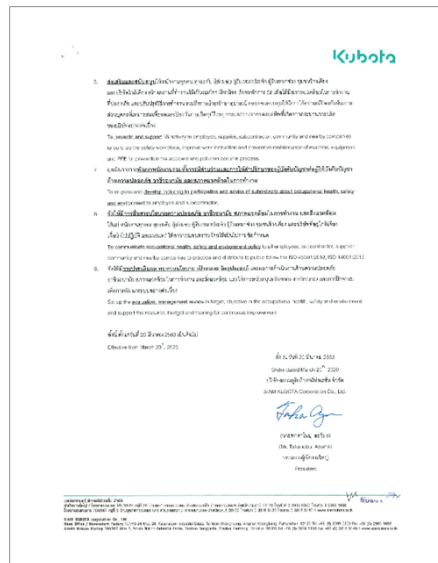
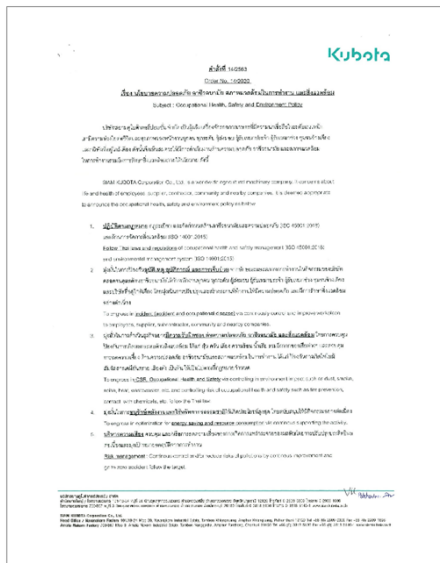


PEM

3. Environmental policy

1. Follow the Thai laws and regulations of occupational health and safety management (ISO 45001:2018) and environmental management system (ISO 14001:2015).
2. To engross in incident (accident and occupational disease) via continuously control and improve workplace for employees, supplier, contractor, community and nearby companies.
3. To engross in CSR, Occupational Health and Safety via controlling in environment impact such as dust, smoke, noise, heat, wastewater, etc. and controlling risk of occupational health and safety such as fire prevention, contact with chemicals, etc. follow the Thai law.
4. To engross in optimization for energy saving and resource consumption via continuous supporting the activity.
5. Risk management : Continuous control and/or reduce risks of pollutions by continuous improvement and go to zero accident follow the target
6. To promote and support 5S activity to employee, supplier, subcontractor, community and nearby companies to build up the safety workplace, improve work instruction and preventive maintenance of machine, equipment and PPE for prevention the accident and pollution occur in process.
7. To engross and develop including tp participation and advise of subordinate about occupational health, safety and environment to employee and subcontractor.
8. To communicate occupational health, safety and environment policy to all employees, subcontractor, supplier, community and nearby companies to practice and distribute to public follow the ISO 45001:2018, ISO 14001:2015.
9. Set up the evaluation, management review in target, objective in the occupational health, safety and environment and support the resource, budget and training for continuous improvement.

Environmental policy



SIAM KUBOTA Corporation (Navanakorn)

4.Environmental performance data (Jan. 2021 to Dec. 2021)

Used amount of energy	Crude oil equivalent KL	1,229
Used amount of water	thousand m ³	17.4

CO₂ emission*	tons CO ₂ e	2,461
---------------------------------	------------------------	-------

*CO₂ emissions from energy sources.

Air Pollutant measurement results				
Main smoke and soot generation facilities		QA Test Run		
	Unit	Control content	Control value	Maximum measured
SOx	ppm	Concentration control	500	ND
NOx	ppm	Concentration control	No Std	8.0
Particulate	mg/m ³	Concentration control	400	3.9

Amount of discharge water	thousand m ³	13.9	
Amount of pollutant in discharge water	COD	ton / year	2.5
	Nitrogen	ton / year	0.3
	Phosphorus	ton / year	-

Water pollutant measurement results				
		unit	Control value	Maximum measured
Public water areas	pH	-	6.0 ~ 9.0	8.2
	BOD	mg/L	20	18
	COD	mg/L	120	71
	Nitrogen	mg/L	100	13
	Phosphorus	mg/L	-	-
	Hexavalent chromium	mg/L	-	-
	Lead	mg/L	1	0.04
	COD, total emission control	kg/day	-	-
	Nitrogen, total emission control	kg/day	-	-
	Phosphorus, total emission control	kg/day	-	-
Sewerage lines	pH	-	6.0 ~ 9.0	9.3 ¹
	BOD	mg/L	450	316
	COD	mg/L	600	632 ²
	SS	mg/L	500	486

*Since it was a temporary excess, there were no administrative penalties. The corrective action was completed.

Waste discharge	tons	220
Recycling ratio	%	100%

VOC emission	tons	14
---------------------	------	----

SIAM KUBOTA Corporation (Navanakorn)

5.Environmental Topics

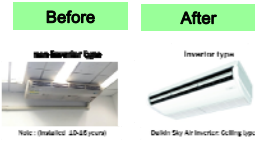
5.1 Energy Consumption Reducing Activity

1) Solar Rooftop at SKCN 735 kWp of DC / 600 KW of AC



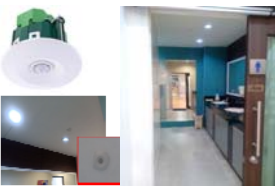
Energy saving 996,870 kWh/year
 TON CO2 reducing 472 Ton CO2/year
 (updated Y2022)

3) Change Air Conditioners (from Non-inverter to Inverter type) at Factory Office



Energy saving 25,440 kWh/year
 TON CO2 reducing 12 Ton CO2/year

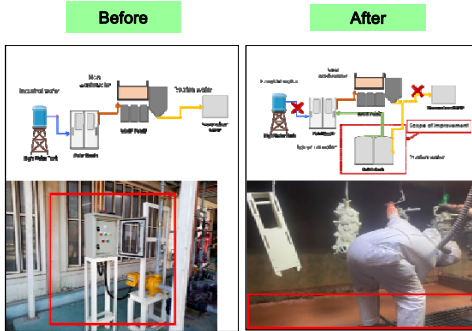
5) Motion Sensor at Rest room



Energy saving 7,033 kWh/year
 TON CO2 reducing 3.3 Ton CO2/year

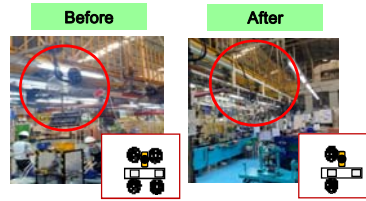
5.2 Water Consumption Reducing Activity

1) Recycle wastewater to Paint booth 2



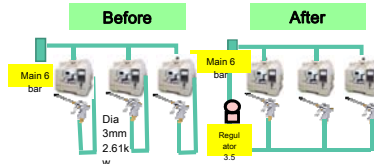
Water saving 780 m3/year
 Cost Saving 21,840 THB/year

2) Lighting & Fan optimization



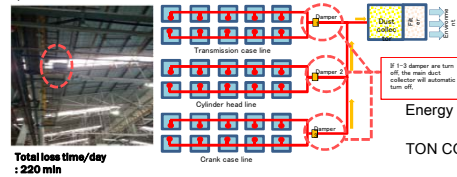
Energy saving 14,006 kWh/year
 TON CO2 reducing 6.6 Ton CO2/y

4) Reduce pressure of Air gun at CC,CH line



Energy saving 4,296 kWh/year
 TON CO2 reducing 2 Ton CO2/y

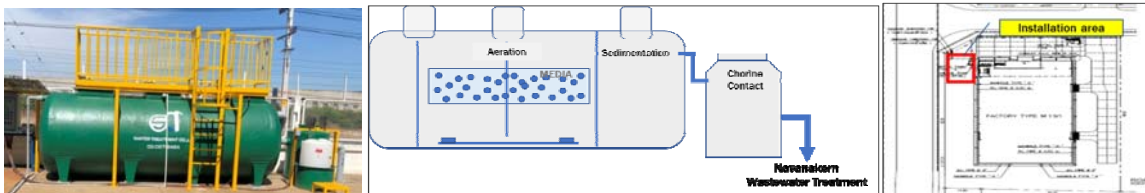
6) Turn off dust collector at Bfreak time



Energy saving 20,280 kWh/year
 TON CO2 reducing 9.6 Ton CO2/y

5.3 Other Activities of Environment

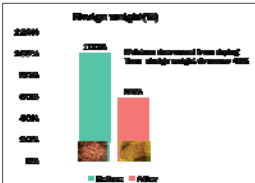
1) Wastewater Treatment at KMAX to support wastewater from COVID-19 Isolation



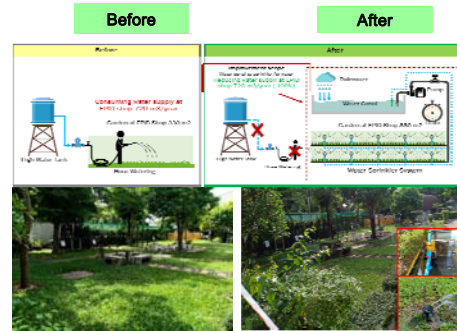
2) Greenhouse for Drying Sludge Station at WWTP Paint2



To reduce moisture content of sludge and to protect wastewater discharge to environment



2) Utilize Rainwater Canal to Watering by Sprinkler at EPID Garden



Water saving 720 m3/year
 Cost Saving 20,160 THB/Year