

Kverneland Group Ravenna S.r.l.

1. Outline

Address	Via A. De Gasperi 34, 48026 Russi (RA) – Italy
Number of employees	153 (Dec, 2021)
Site area	30,000m ²
Establishment day	1922
ISO14001 certification date	-
Site overview	Manufacturing Round Balers, Bale Wrapper Combinations, Bale Wrappers Choppers and Rotary Tillers.



2 . Products

Main products

- Round Balers



3.Environmental policy

1. The Kubota Group aspires to create a society where sustainable development is possible on a global scale.
2. The Kubota Group contributes to the conservation of global and local environments through its environmentally friendly operations, products, and technologies.

- Bale Wrappers



4.Environmental performance data (Jan. 2021 to Dec. 2021)

Used amount of energy	Crude oil equivalent KL	1,226
Used amount of water	thousand m ³	12

CO₂ emission*	tons CO ₂ e	1,897
---------------------------------	------------------------	-------

*CO₂ emissions from energy sources.

Air Pollutant measurement results				
Main smoke and soot generation facilities		No smoke and soot generating facilities		
	Unit	Control content	Control value	Maximum measured
SOx	-	-	-	-
NOx	-	-	-	-
Particulate	-	-	-	-

- Choppers and rotary tillers



Amount of discharge water	thousand m ³	12	
Amount of pollutant in discharge water	COD	kg/year	1306
	Nitrogen	kg/year	7
	Phosphorus	kg/year	343

Water pollutant measurement results				
		unit	Control value	Maximum measured
Public water areas	pH	-	-	-
	BOD	mg/L	-	-
	COD	mg/L	-	-
	Nitrogen	mg/L	-	-
	Phosphorus	mg/L	-	-
	Hexavalent chromium	mg/L	-	-
	Lead	mg/L	-	-
	COD, total emission control	kg/day	-	-
	Nitrogen, total emission control	kg/day	-	-
Phosphorus, total emission control	kg/day	-	-	
Sewerage lines	pH	-	5.5 ~ 9.5	5.75, 8.9
	BOD	mg/L	250	92
	COD	mg/L	500	195
	SS	mg/L	200	48

Waste discharge	tons	255
Recycling ratio	%	71.4%

VOC emission	tons	1.8
---------------------	------	-----

5.Environmental Topics

1. Waste reduction: Reuse and recycle. Creation of a circular economy. Implementing separate waste collection in all production departments, as well as in offices (Respecting 5S colour standards) **【Photo 1 - 2】**
2. Energy saving: stopping manufacturing machines while not in use, LED lighting.
 - >Installed LEDs throughout the plant (outdoor area) - full replacement inside by 2022 planned **【Photo 3 - 4】**
 - > Introduced sensors for automatic light switching **【Photo 5】**
3. Wastewater management: annual analysis of discharge water.
 - > Installed localized meters to identify water consumption by individual production department > installed photocells for taps to avoid wasting water **【Photo 6】**
4. Defined guidelines, shared with all plant operators, on what to do to reduce energy, water and gas consumption **【Image 7】**
5. Created parameterized KPIs to monitor consumption by department **【Image 8】**



【Photo 1】



【Photo 2】



【Photo 3】



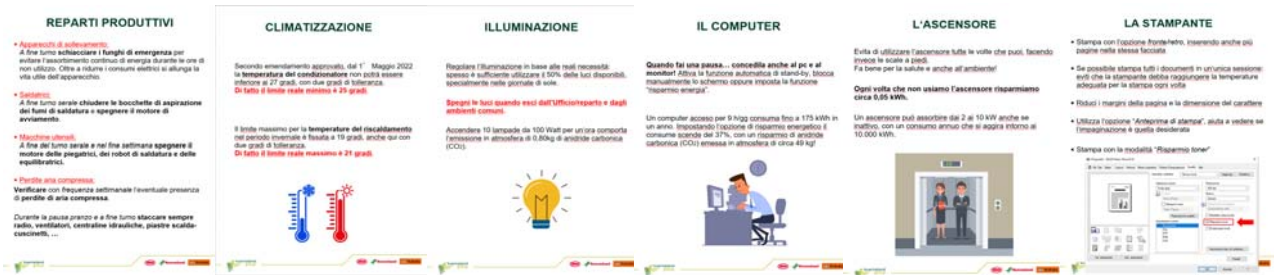
【Photo 4】



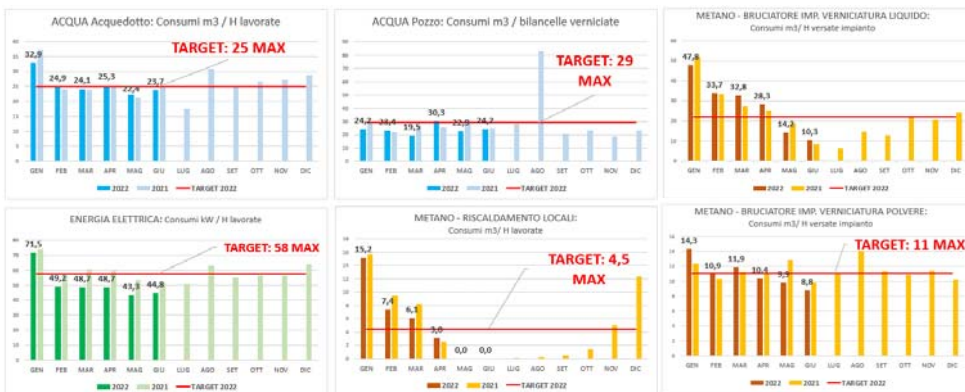
【Photo 5】



【Photo 6】



【Image 7】



【Image 8】

6.Environmental Communication

1. Energy awareness training to employees
2. Training on proper waste disposal. Refined disposal in order to recover as much waste as possible.
3. Sharing consumption monitoring with employees **【Image 8】**