

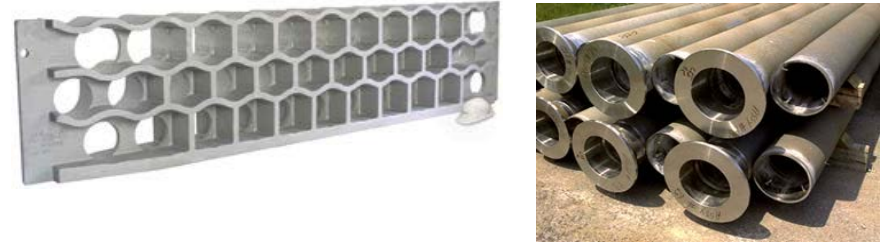
Kubota Materials Canada Corporation

1. Outline

Address	25 Commerce Road Orillia, Ontario Canada
Number of employees	315
Site area	19.2ha
Establishment day	1968
ISO14001 certification date	May-2006

2. Products

Main products



3. Environmental policy

1. The Kubota Group aspires to create a society where sustainable development is possible on a global scale.
2. The Kubota Group contributes to the conservation of global and local environments through its environmentally friendly operations, products, and technologies.

4. Environmental performance data (Jan. 2015 to Dec. 2015)

Used amount of energy	Crude oil equivalent KL	8,792
Used amount of water	thousand m ³	354

CO ₂ emission*	t -CO ₂	10,407
---------------------------	--------------------	--------

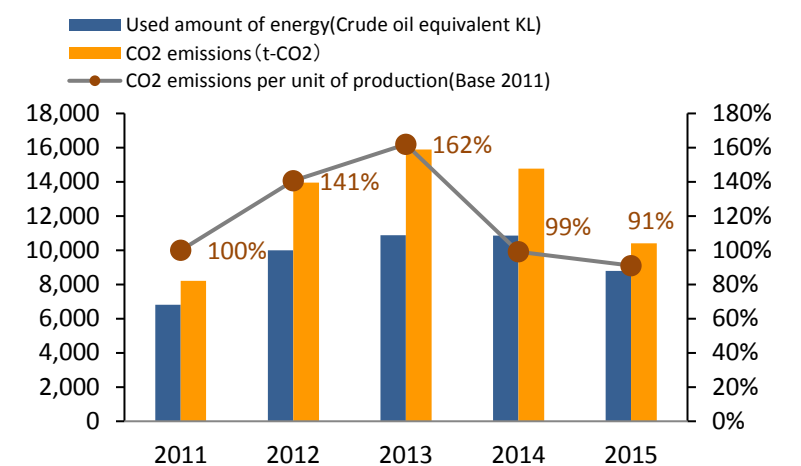
*CO₂ emissions from energy sources.

Air Pollutant measurement results				
Main smoke and soot generation facilities		No smoke and soot generating facilities		
	Unit	Control content	Control value	Maximum measured
SO _x	Total emission control and K-value control: m ³ N/h	-	-	-
NO _x	Total emission control: m ³ N/h, Concentration control: ppm	-	-	-
Particulate	Concentration control: g/m ³ N	-	-	-

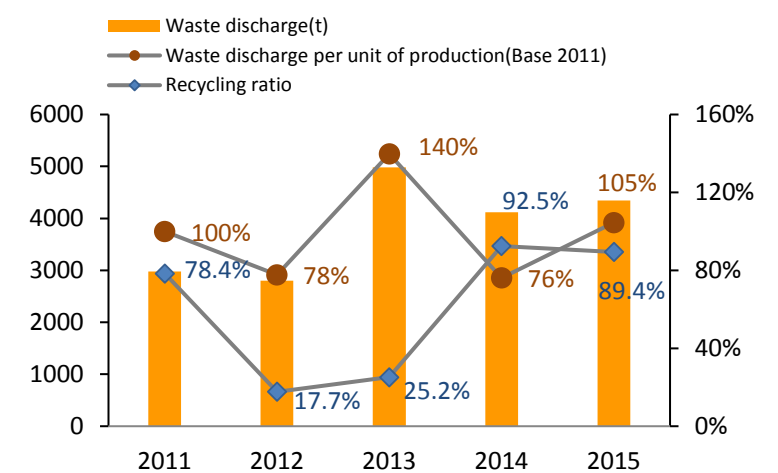
Amount of discharge water	thousand m ³ /year	354	
Amount of pollutant in discharge water	COD	kg/year	-
	Nitrogen	kg/year	-
	Phosphorus	kg/year	-

Water pollutant measurement results				
		unit	Control value	Maximum measured
Public water areas	pH	-	-	-
	BOD	mg/L	-	-
	COD	mg/L	-	-
	Nitrogen	mg/L	-	-
	Phosphorus	mg/L	-	-
	Hexavalent chromium	mg/L	-	-
	Lead	mg/L	-	-
	COD, total emission control	kg/day	-	-
	Nitrogen, total emission control	kg/day	-	-
	Phosphorus, total emission control	kg/day	-	-
Sewerage lines	pH	-	5.5 ~ 9.5	7.4
	BOD	mg/L	300	4
	COD	mg/L	-	-
	SS	mg/L	350	10

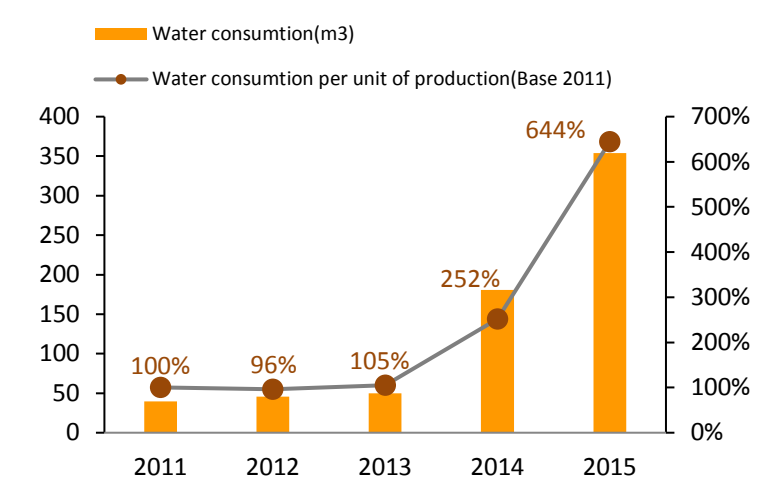
Waste discharge	t /year	4,342
Recycling ratio	%	89.4%



Graph.1 Energy & CO₂ emissions



Graph.2 Waste discharge & Recycling ratio



Graph.3 Water consumption

5. Environmental Communication

Environmental Education

Number of participants: 336

Annually all employees are trained on environmental considerations and the KMC Environmental Policy is reviewed. Environmental management training is renewed if an area has violated an EMS Safe Work Procedure, thus indicating that refresher training is needed.